

Accelerating **Pharmaceutical R&D** Overcoming Challenges through Integrated **AI-Driven Platforms**



CONTENT

Introduction The Critical Imperative for Accelerating Pharmaceutical R&D	1
Barriers to Accelerating Innovation.....	1
The Role of AI/ML and Data-Driven Approaches in Pharma R&D.....	2
Current State of AI Adoption in Pharmaceutical firms	2
The Strategic Advantage of having Mature AI Platforms	3
Integrated "Molecule-to-Medicine" Acceleration: A practical operating model	4
Conclusion	8

Introduction: The Critical Imperative for Accelerating Pharmaceutical R&D

The pharmaceutical industry has historically faced a persistent productivity gap marked by incremental declines in R&D efficiency despite occasional gains, underscoring the need for transformational change to sustain the innovation speed..

While drug discovery continues to advance rapidly, the time and cost to develop and approve new medicines have increased, challenging the very ability of the industry to meet the evolving patient needs and the demands of the market. This widening supply-demand gap also calls for a shift in view of how pharma R&D operates, one that transcends traditional methodologies to embrace next-generation technological foundations. Future-proofing pharma labs to tackle this ever-widening supply-demand gap makes it highly imperative for the R&D function to shorten its cycle and keep pace with drug discovery breakthroughs and ever-shrinking timelines from molecule identification through regulatory approvals to market entry, so that the market benefits from the innovations without undue delay. As per secondary research, if intelligent technologies are used on a scale and workflows are reinvented appropriately, companies can bring new medicine to market four years faster, earning an extra \$2 billion per successful drug.

This is also exactly the area which requires integration of cutting-edge digital capabilities now more than ever – the technological foundation that can harmonize complex data flows, streamline workflows, and enable agile experimentation at scale.

Barriers to Accelerating Innovation

The Pharmaceutical R&D is intensively carried out in specialized labs. The laboratory processes are often manual, repetitive, and prone to error, which reduces productivity and compromises the speed of experimentation. Additionally, there are several intrinsic housekeeping barriers that impact lab efficiency and hinder the adoption of transformative technologies. The key challenges for Laboratory Information Management Systems (LIMS) include fragmented data ecosystems where information remains siloed across disparate sources, complicating data sharing and slowing insight generation.

For example, in most cases, scientists in R&D laboratories lack an integrated environment for assay analysis. The sample analysis and method validation require statistical computations. In most cases, there is little or no integration between LIMS and the analytical tools used for such computations. This makes the process inefficient, requiring manual work and the need for data validation in multiple systems. The process is also vulnerable to manual errors, leading to further loss of productivity. An integrated setup that can work with instrument data and LIMS data and run the necessary analysis end-to-end, is critical for the labs.

Adding to these challenges, evolving regulatory complexities add another layer of friction, with stringent compliance requirements limiting agility and increasing the burden of documentation. Additionally, global access disparities, intellectual property issues, and budget constraints further constrain innovation flow.

As per a recent McKinsey study, generative AI (GenAI) could unlock \$60 billion to \$110 billion in total annual value for the pharmaceutical industry. Out of this total value, GenAI could unlock value worth \$15-28 billion in R&D alone. Yet, realizing this promise requires a concerted effort to not just invest in streamlined data management, but also a cultural mindset shift of building trust in evolving technologies, thus enabling pharmaceutical R&D labs to break free from legacy limitations and accelerate groundbreaking discoveries.



The Role of AI/ML and Data-Driven Approaches in Pharma R&D

In response to persistent barriers hindering pharma R&D innovation, the adoption of AI/ML and data-driven approach becomes indispensable in reshaping the drug development landscape. Advanced AI and machine learning models process vast and diverse datasets, enabling precise predictions for drug-target interactions, optimizing experimental design, and streamlining complex workflows with automation. Manual analysis, in contrast, typically takes much longer to interpret. Additionally, the AI models could potentially use Natural Language Processing (NLP) to analyze scientific literature, patents, clinical trial data, and other text-based sources to extract valuable insights, identify trends, and stay updated with the latest research. Coupled with big data analytics, these technologies improve data integration across research, clinical development, and manufacturing, promoting seamless interoperability and scalability through cloud computing and modular digital architecture.

Secondary research shows several case studies where AI-driven drug discovery aids the R&D setting, where machine learning and data-centric methods are used systematically to narrow from vast chemical and biological spaces to a small set of high-value candidates. At the foundation sit large, heterogeneous data repositories containing information on diseases, molecular structures, biological assays, and prior experiments, which serve as raw input for advanced analytics. Multiple AI models - for example those focused on understanding transcriptional responses, predicting structural interactions, or mapping pathway activation - process these inputs and generate quantitative scores and biological insights. Their outputs are then combined through ensemble techniques that integrate evidence across models and prioritize the most promising compounds for further investigation. Such end-to-end integration, from initial data ingestion through candidate triage to development decisions, illustrates how AI and machine learning can enable faster, more informed choices and materially accelerate innovation in pharmaceutical R&D.

Apart from the R&D function case-study highlighted above, there are numerous other functional use-cases where AI/ML could typically be useful. From our own extensive experience of executing digital transformation projects across process industries, we can clearly endorse

that AI can help identify operational inefficiencies and predict potential equipment failures, enabling preemptive maintenance that minimizes downtime and reduces unexpected disruptions. AI-powered analytics support personalized medicine by integrating multi-omics and real-world evidence, enhancing the accuracy and relevance of therapeutic discoveries. This digital transformation reduces discovery-to-market timelines, cuts costs, optimizes clinical trials, and strengthens compliance through enhanced data governance. AI can sift through huge amounts of data from the past research and clinical trials to identify potential new applications for known drugs – also known as drug repurposing - a new area that has recently gained a lot of traction.

Ultimately, this shift also transforms pharmaceutical R&D, which happens to be the focus of the article here, from siloed, manual processes into an agile, collaborative, and insight-driven ecosystem, laying a robust foundation for accelerated innovation and positioning organizations for sustained competitive advantage.


Current State of AI Adoption in Pharmaceutical firms

Global pharma companies have launched numerous AI pilot projects, yet comprehensive, enterprise-wide AI adoption remains limited. Most AI applications are concentrated on clinical development, with a few scattered use-cases in operations, but the adoption of AI in core R&D has had limited impact so far. At the same time, secondary research indicates that there are some ongoing AI-based pilots in the research phase too, however, despite initial investments in some of the functional areas highlighted above, AI integration is generally at advanced pilot or early deployment phases rather than full operational maturity. Also, most of these pilot project initiatives also remain highly fragmented, with core focus on isolated functions only and limited end-to-end integration. This creates a strong case for integrated, horizontally and vertically connected approaches that link discovery, development, and manufacturing.


The Strategic Advantage of having Mature AI Platforms


In this light, it is important for pharma companies, seeking to do technology-driven R&D transformation, to prioritize investments in integrated, enterprise-grade platforms rather than rely on isolated or fragmented AI/ML projects that risk creating new silos and inefficiencies. Also, for such organizations seeking to implement AI on a scale, the choice of AI platform becomes critical. The right AI platform enables scalable, interoperable, and end-to-end orchestration of advanced analytics for sustained innovation and operational impact. Fortunately, there are some emerging enterprise-grade AI platforms that are beginning to offer significant advantages over nascent solutions through proven scalability, robust security frameworks, and comprehensive integration capabilities.

The advanced AI platforms distinguish themselves through critical capabilities:


- 


Modular Analytics Engine
No-code and code-based development combining traditional machine learning, generative AI/LLM, and automated data analysis for enterprise-scale agentic applications.
- 

Semantic Data Framework
Ontology and knowledge graph-based integration that contextualizes data and grounds AI insights in operational realities.
- 

Unified Data Architecture
Real-time and batch data ingestion and transformation across relational and NoSQL formats, with comprehensive lakehouse storage for all data types.
- 

Self-Service Intelligence
Dashboarding and operational reporting with on-demand and scheduled distribution, enabling real-time visibility into critical process variables and AI-driven recommendations.
- 

Enterprise Governance & Compliance
Advanced workbench with user administration, row/column-level authorization, role-based configuration, audit trails, and model performance tracking for regulated environments.
- 

Cloud-Agnostic Architecture
Containerized deployment across on-premises, AWS, Azure, and Google Cloud without vendor lock-in, ensuring operational flexibility and resilience.
- 

Pre-built Industrial Workflows
Ready-to-deploy applications for predictive maintenance, asset optimization, and process control with native integration to in-house systems and APIs.

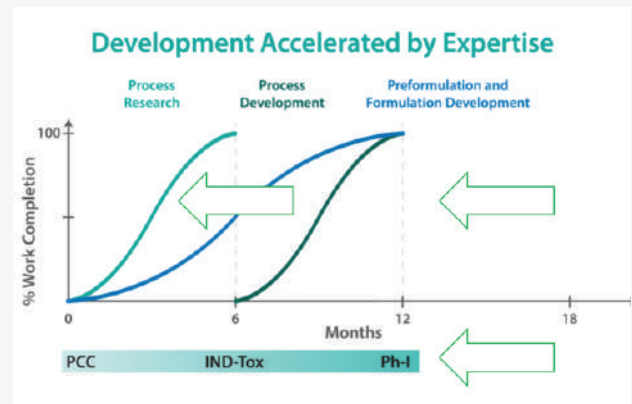
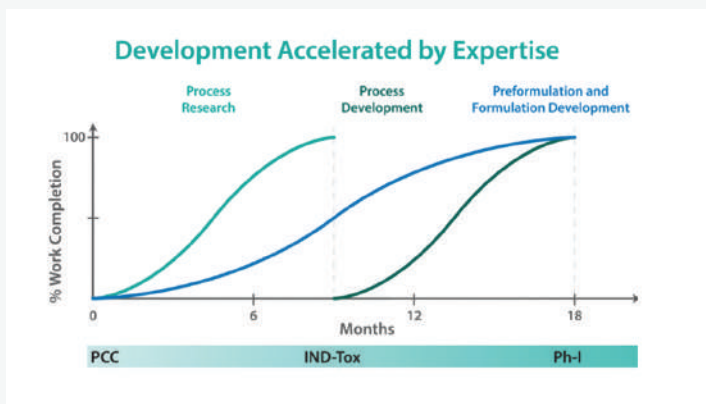
By orchestrating all these critical AI functions from data to insights to deployment – all within an integrated ecosystem, pharma enterprises can potentially accelerate their R&D transformation from months to weeks while maintaining enterprise-grade governance.

Also, the full value of such platforms is realized when they are applied to an integrated, end-to-end operating model that spans discovery, development and manufacturing. The following section illustrates what this looks like for an accelerated molecule-to-medicine journey.

Integrated “Molecule-to-Medicine” Acceleration: A practical operating model

This part presents one representative blueprint for accelerated development that combines integrated process innovation with horizontal data fabric and AI-enabled decisioning. At a high level, this approach aims to compress time to first-in-human by around six months while improving quality and sustainability.

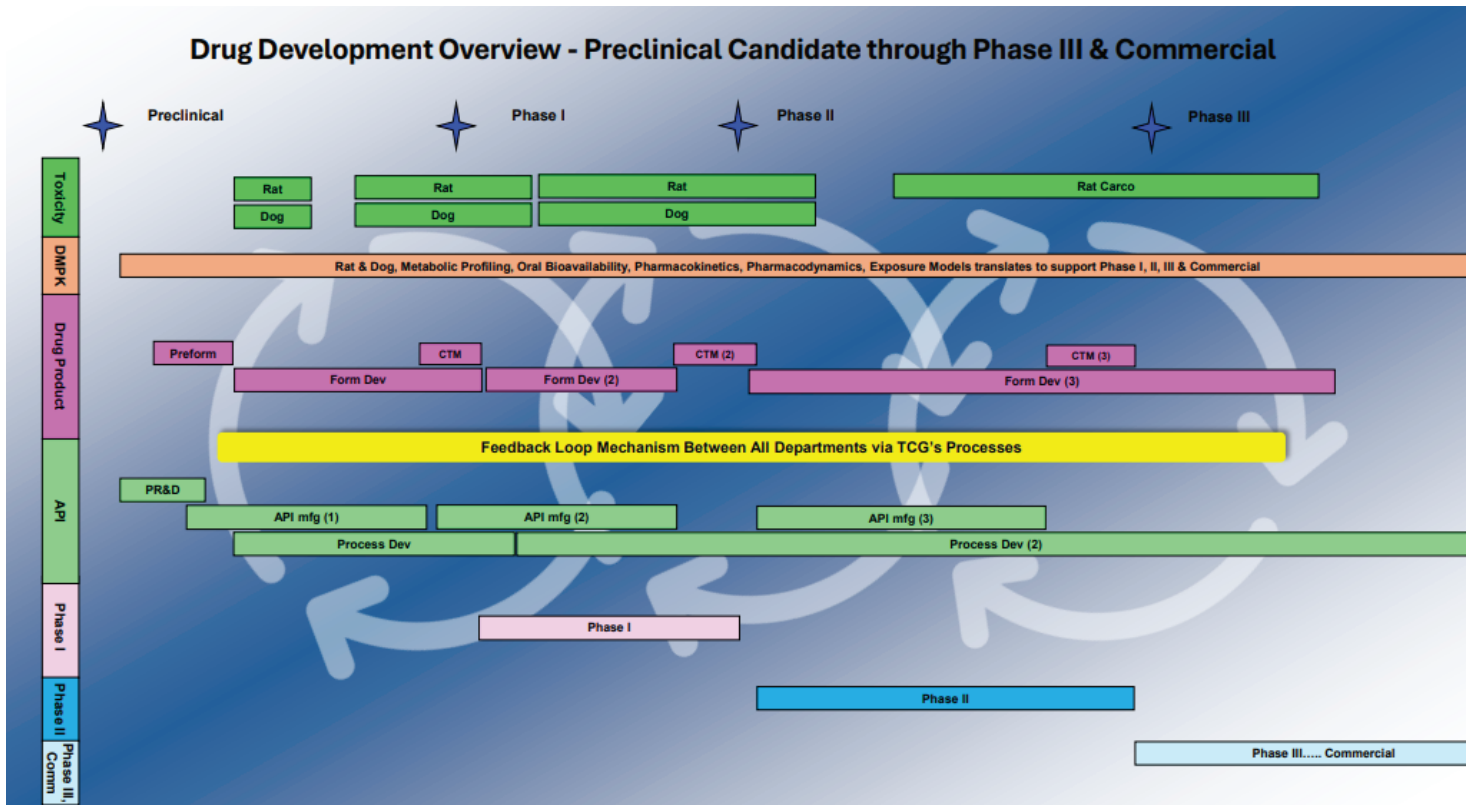
In this blueprint, the core challenge is the traditional 7 plus year, incremental and costly journey from discovery to market, and the response is to look beyond optimising clinical trials alone and systematically accelerate upstream stages such as target identification, molecule selection, process development, and early stage manufacturing. The ambition was to deliver Phase I clinical material in roughly 12 months instead of 18, supported by sharper Go/No Go discipline, through horizontal and vertical integration across discovery, development, and manufacturing, underpinned by data driven, sustainable ways of working.



The above was achieved by focusing on accelerating the molecule to medicine journey via horizontal and vertical data integration across discovery, development and manufacturing enabling end-to-end insights, optimizing processes, accelerating timelines, and improving product quality and compliance.

We also estimated that a 6 month development acceleration would positively impact an equivalently earlier time to launch. Delivering this level of compression in practice requires a tightly integrated operating model across chemistry, CMC, development and manufacturing, underpinned by horizontal data integration and mature AI capabilities.

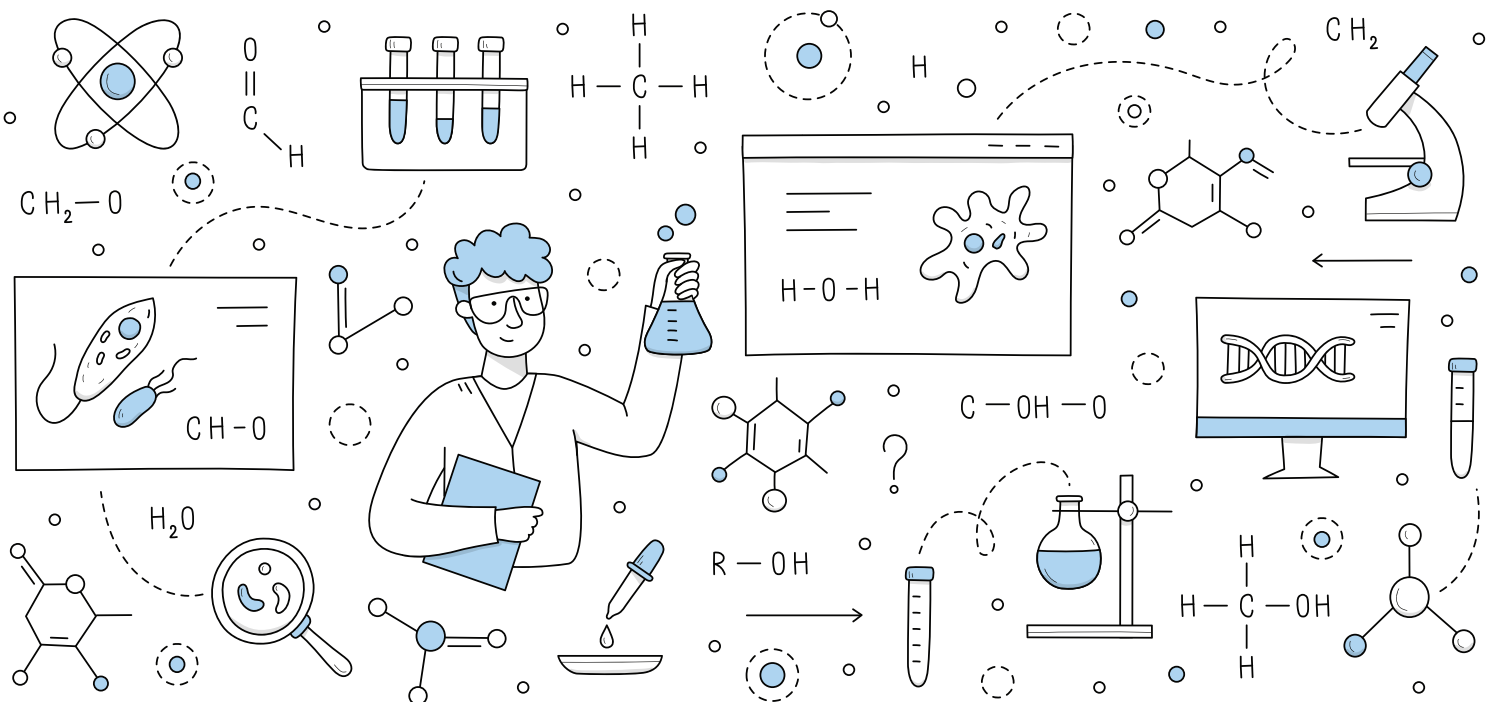




At its core, the value proposition of such an approach is to compress timelines from discovery to clinic, improve sustainability, and reduce development risk by attacking the problem on two fronts:

Horizontally optimising key drug development processes

Vertically and horizontally integrating data across discovery, development and manufacturing.



Horizontally optimising key drug development processes



Accelerating route design and process development using advanced technologies such as novel catalysts, continuous flow, photochemistry, electrochemistry and crystal engineering to shorten non GMP and cGMP development for preclinical and clinical supply.



Applying green and sustainable chemistry principles, eliminating hazardous or uneconomic steps, and improving oral bioavailability of poorly soluble compounds through enabling technologies.



Rapid, safe scale up from lab to kilo, pilot and commercial facilities, with robust characterization, polymorph control and crystal engineering to support downstream formulation and clinical trial manufacturing.



Designing scalable, practical and economically viable syntheses and formulations that can seamlessly progress from Phase I through Phase II toward commercialization.

Vertical and horizontal integration across CMC, DMPK/PD, tox and clinical further unlocks speed and quality by



Enabling real-time knowledge sharing between functional groups at key stage gates, and feeding late-stage development insights back into early preclinical candidates to accelerate pipeline progression.



Using drug-product miniaturisation to run pre-formulation and formulation development in parallel with limited API, while shared analytical methods cut duplication, wasted material and overall resource use.



Creating combined Drug Substance and Drug Product teams with a “first-time right with line of sight” mindset, reducing post-Phase I delays and formulation-related bridging studies.



Running cGMP manufacturing in parallel with formulation development, so clinical trial manufacturing can start as soon as cGMP drug substance is available, improving CMC robustness, regulatory readiness, and cost efficiency.

Collectively, these elements enhance late-stage manufacturing quality and consistency, support smoother regulatory submissions, improve risk management and lower overall cost per molecule.

To implement such an integrated way of working in a timely and cost-effective manner, technology must act as the backbone: **a modular, scalable AI platform suite that connects data across discovery, development, and manufacturing and overcomes traditional challenges of high data volumes, isolated workflows, siloed systems, and heavy manual cognitive effort.**



Key enablers for this integrated platform offering will include:

- A federated data lakehouse technology
- Pipelines to ingest and harmonize structured/unstructured data
- Knowledge Graphs to connect relationships across data types
- AI/ ML Models for predictive and prescriptive analytics
- Easy and efficient extraction of information in natural language combining Generative AI and Knowledge graph technologies
- Data governance to ensure quality, security, and compliance
- Cross-functional teams with domain, technology, and data science expertise

Conclusion

This forward-looking perspective underscores that the future of pharmaceutical R&D lies in harmonized technology ecosystems and empowered teams. Central to this transformation is the adoption of mature AI platforms, which enable seamless integration, scalability, and governance of advanced analytics across the drug development lifecycle. By moving beyond fragmented AI efforts to enterprise-grade solutions, pharmaceutical organizations can unlock the full potential of AI-driven insights, accelerate innovation cycles, and sustainably improve R&D productivity. This strategic foundation positions the industry not only to thrive amid growing complexity but also to continually advance human health through faster, more effective discovery and delivery of life-changing therapies.



References

1st Para

- *Unparalleled Possibilities: Biopharmaceutical R&D reinvented*
- *The pharmaceutical productivity gap – Incremental decline in R&D efficiency despite transient improvements - ScienceDirect*
- *Accelerating Drug Development To Keep Pace With Drug Discovery*
- *Pharmaceutical R&D and drug approvals: speed, safety, access - Zocto*
- *Boosting biopharma R&D with a next-gen tech stack | McKinsey*
- *Future-proofing pharma R&D labs | Deloitte Insights*

3rd Para

- *Boosting biopharma R&D with a next-gen tech stack | McKinsey*
- <https://www.ey.com/content/dam/ey-unified-site/ey-com/en-in/insights/health/ey-from-volume-to-value-indian-pharma-s-transformation-with-data-and-ai.pdf>
- *7 Examples of Digital Transformation in Pharmaceutical Industry | Svitla Systems*
- *(PDF) Digital transformation and industry 4.0 in pharma manufacturing: the role of iot, ai, and big data*

2nd Para

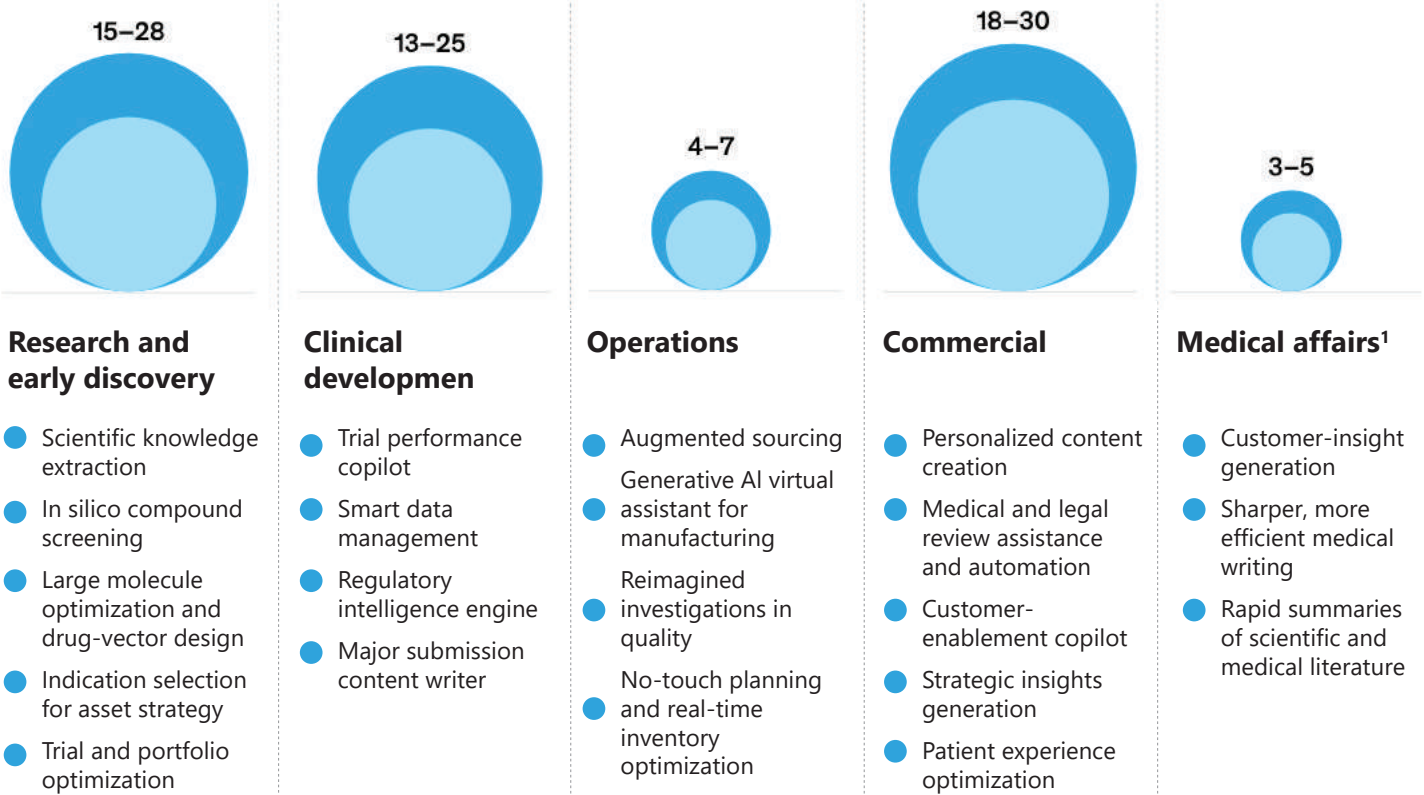
- *Generative AI in the pharmaceutical industry | McKinsey*
- *Overcoming adoption challenges in the pharma R&D labs | HCLTech*
- *Overcoming Innovation Barriers in Pharma RD: The Tools and Strategies for Success - KanBo*
- *Advancements and Challenges in Pharmaceutical Innovation: Navigating Regulation, Technology, and Global Access*

4th Para

- *Oil & Gas article*
- *Panchali's content*
- *McKinsey Reports.*

Generative AI could propel holistic results in the life sciences sector in a number of ways.

Expected value annually (not exhaustive), \$ billion



¹Via efficacy gains on expenditures. Source: McKinsey analysis

5th Para

- *Work done for O&G piece*



TCG Digital is the digital & AI arm of The Chatterjee Group (TCG), a multi-billion dollar conglomerate with a diverse portfolio in Aviation, Pharmaceuticals, Biotech, Petrochemicals, and Real Estate across the US, EU, and South Asia. Our umbrella includes companies such as LabVantage, Lummus Technology, and TCG LifeSciences. At TCG Digital, we are driven by our mantra of delivering "Velocity to Value", helping enterprises transform faster and smarter. Our AI Analytics platform mcube™ is at the heart of these transformations. We enable organizations unlock the full potential of their data, and by seamlessly integrating AI/ML capabilities into their business processes, we empower businesses to accelerate their digital transformation journey, enhancing agility and driving impactful results.

www.tcgdigital.com



mcube™ is TCG Digital's flagship Data, AI, and Analytics platform—engineered at the intersection of deep industry knowledge and digital innovation. Built on a domain-driven design, it seamlessly navigates the most complex and disparate data landscapes. With AI 2.0 at its core, mcube™ fuses advanced models with real-world context to solve high-impact business challenges. By integrating mcube.data, mcube.ai, and mcube.agents, it transforms enterprise data into intelligent ecosystems. mcube™ drives semantic discovery through ontologies, and empowers agentic applications for autonomous decision-making and continuous learning. From harmonizing data to deploying intelligent agents, mcube™ accelerates 'velocity to value'—delivering clarity, intelligence, and outcomes at scale.

www.tcgdigital.com/tcg-mcube

Contact Us

✉ contact@tcgdigital.com
🌐 www.tcgdigital.com

📍 TCG DIGITAL SOLUTIONS LLC
265 Davidson Ave, Suite 220 Somerset
New Jersey 08873